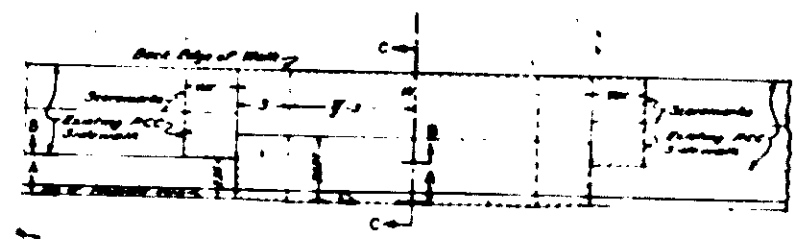
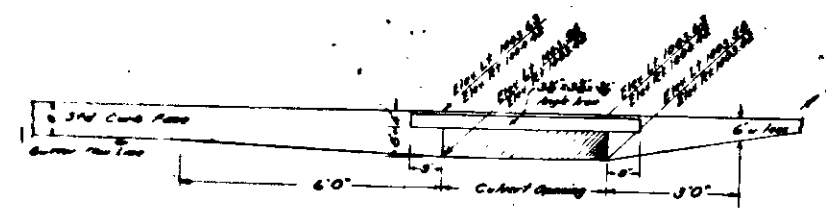


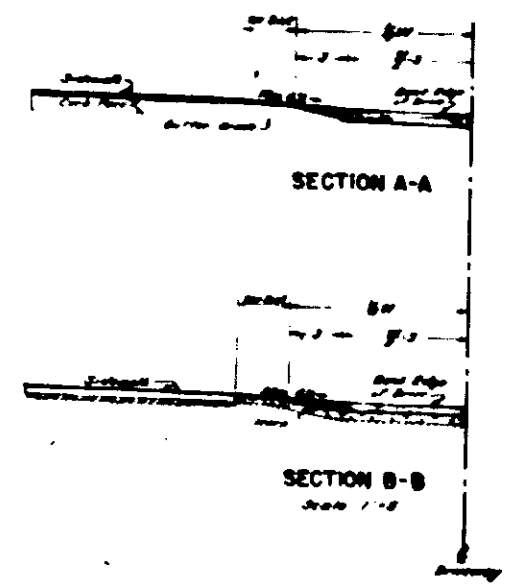
R.O. S. O'Brien  
 June 20, 1942  
*J.H. Lusk*



PLAN FOR COMMERCIAL DRIVEWAY  
 NORTH ON E ST  
 Scale 1"=8'



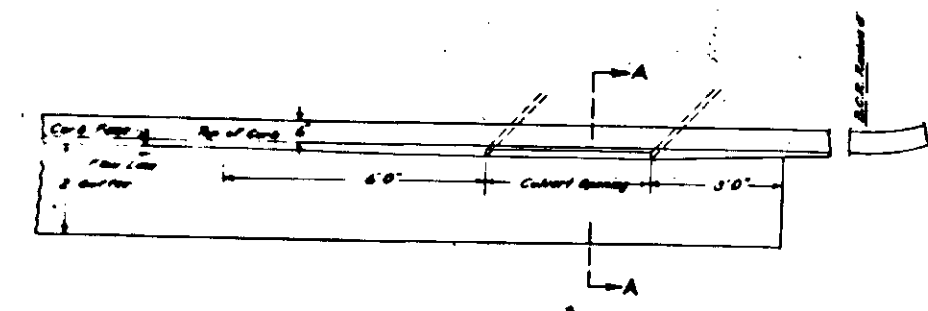
TYPICAL ELEVATION OF INLET  
 Scale 1"=2'



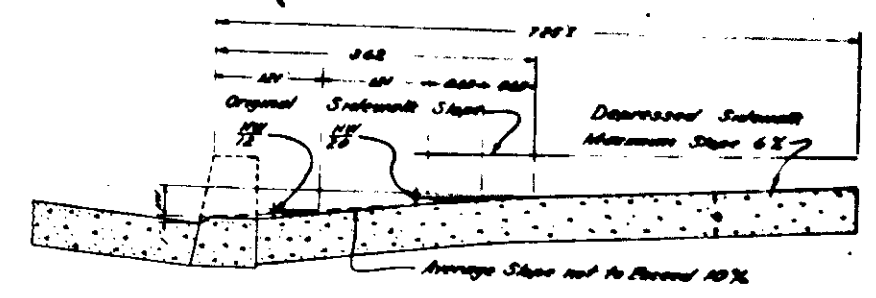
LIST OF DRIVEWAYS

RIGHT SIDE		LEFT SIDE	
SPACING @ 30'	WIDTH	SPACING @ 30'	WIDTH
1'-00"	24"	1'-10"	24"
1'-00"	24"	1'-10"	24"
3'-00"	24"	3'-00"	24"
3'-00"	24"	3'-00"	24"

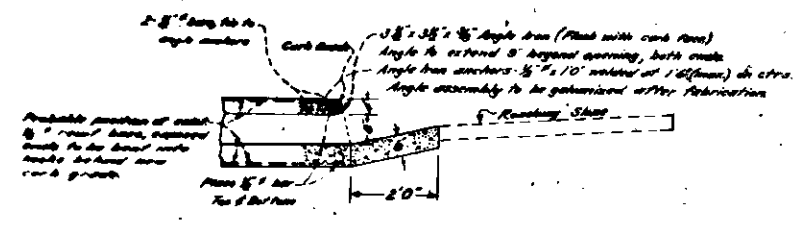
Note: All Driveways are Concrete



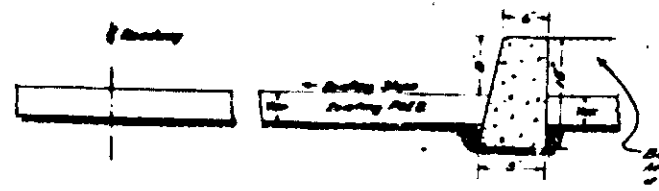
TYPICAL PLAN OF INLET  
 Scale: 1"=2'  
 NORTH ON E ST  
 (Sta 0+00 RT & Sta 0+87.22)



SECTION C-C  
 Scale 1"=1'



SECTION A-A  
 Scale: 1"=2'



DETAIL OF P.C.C. CURB  
 Scale 1"=1'

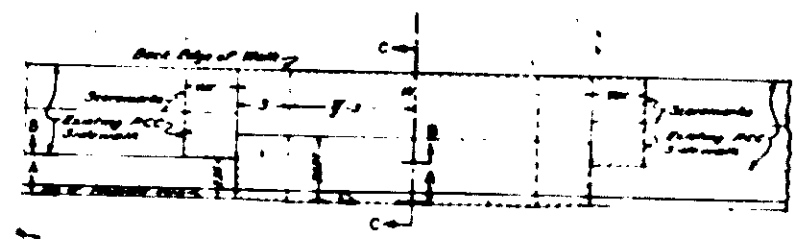
(S.E. Corner of E St and on  
 400' S.E. and on SW Corner  
 between Mill St and Cotton St)

DETAILS OF CULVERTS,  
 CURBS, AND DRIVEWAYS

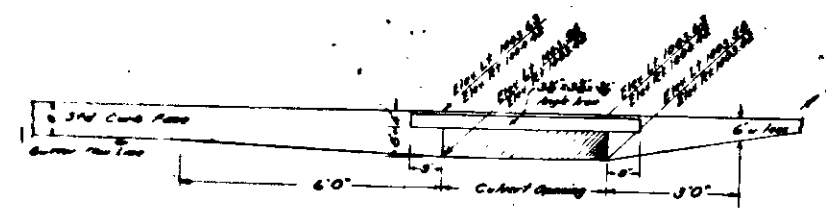
SCALE AS SHOWN



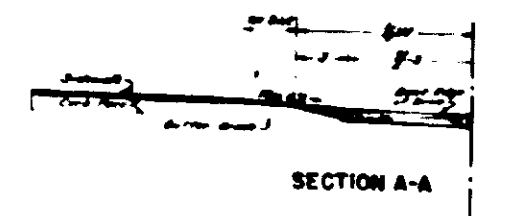
R.O. S. O'Brien  
 June 20, 1942



PLAN FOR COMMERCIAL DRIVEWAY  
 NORTH ON E ST  
 Scale 1"=8'



TYPICAL ELEVATION OF INLET  
 Scale 1"=2'



SECTION A-A  
 Scale 1"=8'

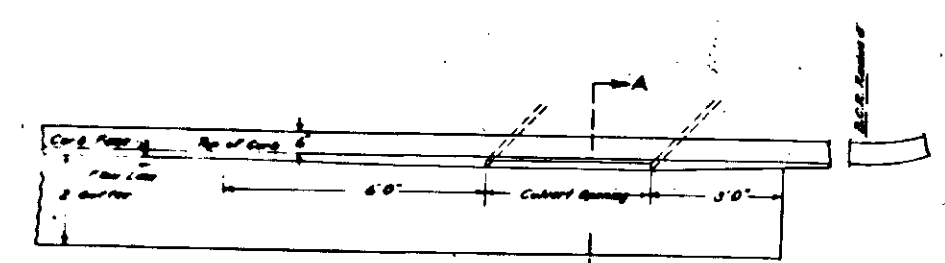
LIST OF DRIVEWAYS

RIGHT SIDE		LEFT SIDE	
SPACING @ 30'	WIDTH	SPACING @ 30'	WIDTH
1'-00"	24"	1'-10"	24"
1'-00"	24"	1'-10"	24"
3'-00"	24"	3'-00"	24"
3'-00"	24"	3'-00"	24"

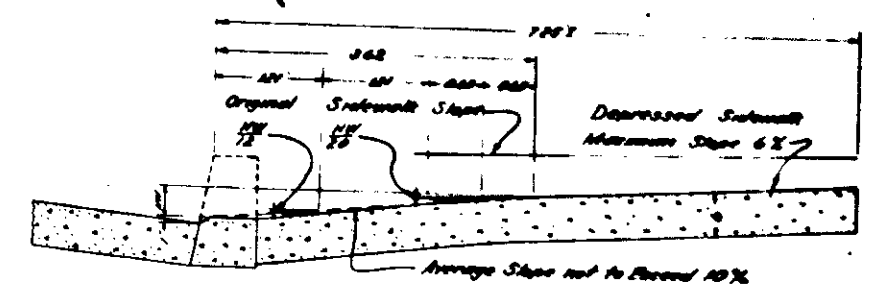
Note: All Driveways are Concrete



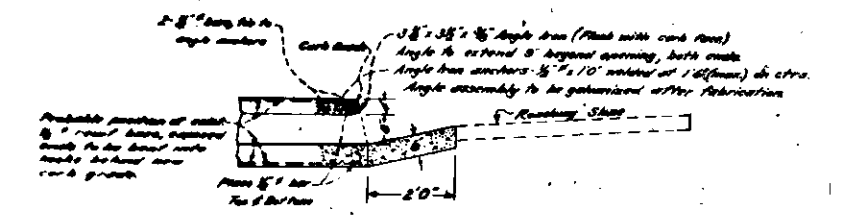
SECTION B-B  
 Scale 1"=8'



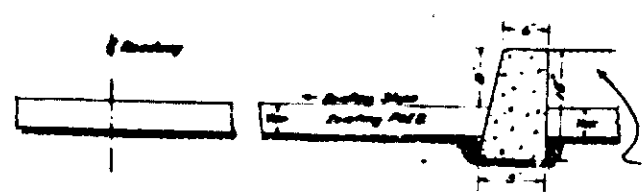
TYPICAL PLAN OF INLET  
 Scale: 1"=2'  
 NORTH ON E ST  
 (378 0'-00" RT & 378 0'-00" LT)



SECTION C-C  
 Scale 1"=2'



SECTION A-A  
 Scale: 1"=2'



DETAIL OF P.C.C. CURB  
 Scale 1"=2'

(S.E. Corner of E ST and on  
 400' S.E. and on S.W. Corner  
 between 5th St. and Cotton St.)

DETAILS OF CULVERTS,  
 CURBS, AND DRIVEWAYS

SCALE AS SHOWN